

SLD-i Innovative Cold Work Tool Steel



800-543-1566

SLD-i Advanced Cold Work Tool Steel = Improved AISI D2.

Microstructure

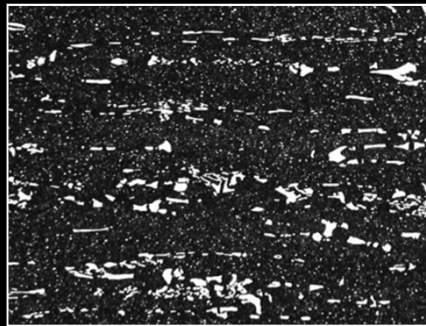
D2



Coarse & directional carbide distribution

- Large & anisotropic heat treatment deformation
- Medium galling & wear resistance
- Characteristics will be affected by grain direction

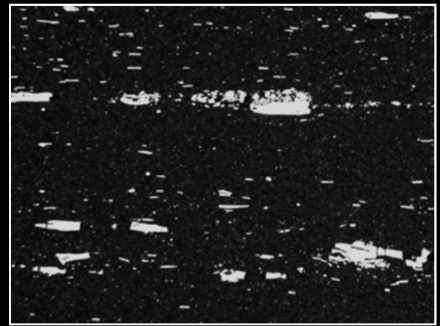
SLD-i



Small, dense & homogeneous carbide distribution will contribute to

- Small & isotropic heat treatment deformation
- Good galling & wear resistance
- Achieve higher hardness than D2/1.2379

8%Cr steel Grade



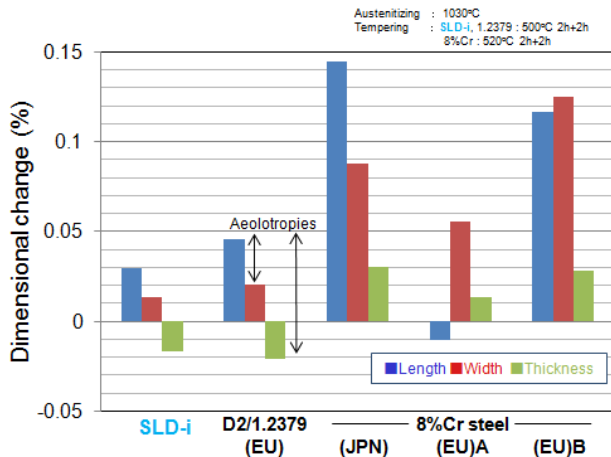
Small & sparse carbide distribution

- Large heat treatment deformation
- Worse galling & wear resistance
- Good toughness & machinability

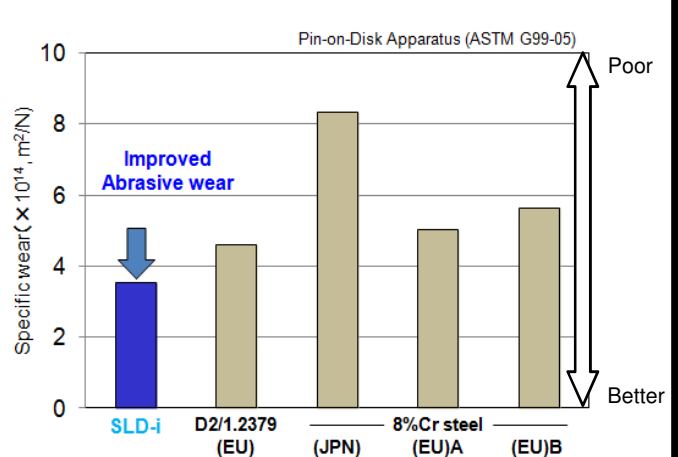
100µm

Features

Dimensional change by heat treatment



Wear resistance



SLD-i = Shorter Lead Times and Improved Production vs. D2

"SLD" is trademarks of Hitachi Metals, Ltd.